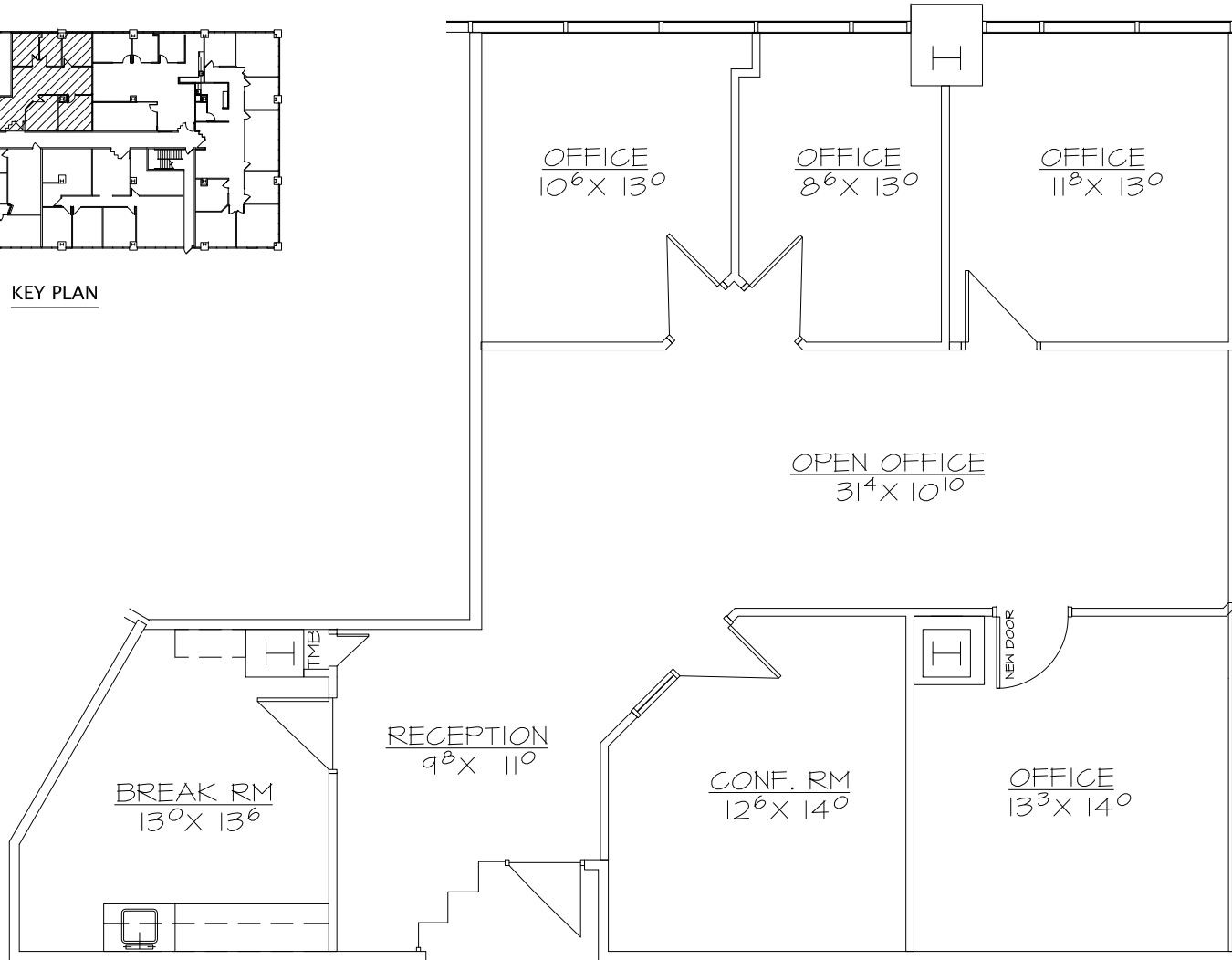


KEY PLAN



**SUITE #104**

DATE: 5.3.19

N.T.S.



1,684 RSF



M c C A R T H Y  
Architectural Interiors  
2850 East Camelback Road  
Suite 250  
Phoenix, Arizona 85016  
Telephone 602.955.4499  
Facsimile 602.955.4599  
N O R D B U R G

**5080 BUILDING**  
5080 NORTH 40TH STREET  
PHOENIX, ARIZONA

**Camroad Properties**  
Contact: Portia Dempsey  
Office: (602) 956-2200  
Fax: (602) 956-1503