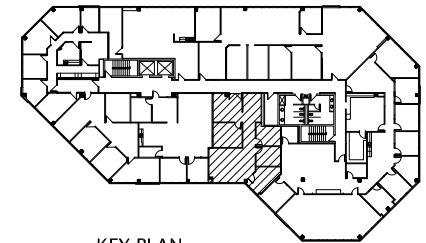


SUITE #301

DATE: 8.28.19

Scale: 1/8"=1'-0"



KEY PLAN

1.568 RSF



M C C A R T H Y
Architectural Interiors
2850 East Camelback Road
Suite 250
Phoenix, Arizona 85016
Telephone 602.955.4499
Facsimile 602.955.4599
N O R D B U R G

7250 BUILDING
7250 N. 16TH STREET
PHOENIX, ARIZONA

Camroad Properties
Contact: Portia Dempsey
Office: (602) 956-2200
Fax: (602) 956-1503